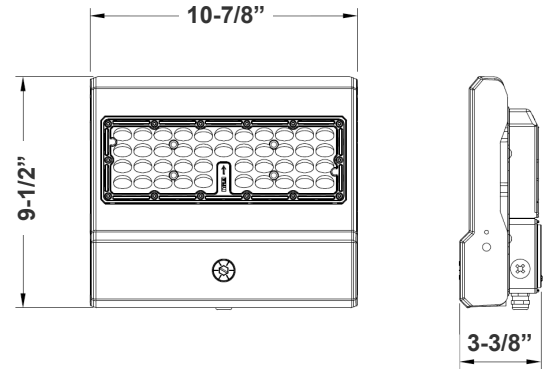


LFCO-50W-40K  
LFCO-50W-50K



Customer Name: \_\_\_\_\_  
Project Name: \_\_\_\_\_  
Note: \_\_\_\_\_ Type: \_\_\_\_\_



9-1/2"(L) x 10-7/8"(W) x 3-3/8"(H)

Ideal for general site lighting, alleys, loading docks, doorway, pathway, and parking areas.

## Features

- LED Flood Light
- With snap-on & bolt mounting options for one-person Installations.
- Select a mounting option (Sold separately)
- 70,000 Hours Rated Life
- 7-Year Warranty
- Optic Lens Type: III

## Technical Specifications

### Electrical:

- Voltage: 100-277VAC 50/60Hz
- Wattage: 50W
- Power Factor: >0.9
- Output Current: 0.25A
- Efficacy: 138 LPW
- THD: <20%

### Mechanical:

- Housing: Die-cast Aluminum Housing with Powder Coat Finish (Dark Bronze)
- 6KV Lightning Surge Protection
- IP Rating: IP65
- Operating Temperature: -40°F to 104°F
- Suitable for Wet Locations
- Effective projected areas (EPA's) are:  
Front = 0.38 square feet  
Side = 0.30 square feet  
Face = 1.05 square feet

### Lighting:

- Dimmable: 0~10V Dimming
- LED: Philips Lumileds Lexeon 3030 high flux LED
- Lens Type: Optical TYPE III Lens, High Light TransmittancePC, Anti-UV and Flame Resistant
- Solid State Lighting technology for long life, no Maintenance needed and High-Efficiency
- Cord Type: 3.2' SJTW 18/3 AWG cable
- Total lumens: 6900LM
- Color Temperature: 4000K/ 5000K
- Color Rendering index: CRI ≥ 70
- Beam Angle: 140°x80°

### Applications:

- Ideal for general site lighting, alleys, loading docks, doorway, pathway and parking areas.
- Replace existing HID flood lights/ wall packs

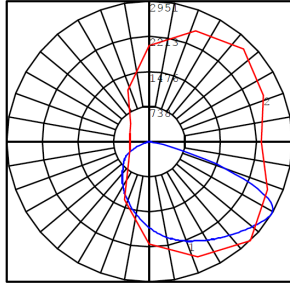
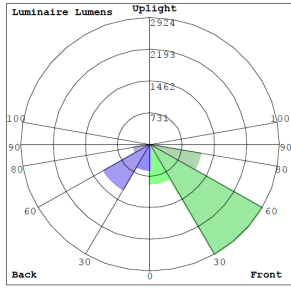
### Other Models:

- |                                  |                                  |  |
|----------------------------------|----------------------------------|--|
| • 80W   10800LM   LFCO-80W-40K   | • 150W   19900LM   LFCO-150W-40K | • 300W   41000LM   LFCO-300W-40K       |
| • 80W   10800LM   LFCO-80W-50K   | • 150W   19900LM   LFCO-150W-50K | • 300W   41000LM   LFCO-300W-50K       |
| • 100W   14000LM   LFCO-100W-40K | • 230W   30100LM   LFCO-230W-40K | • 600W   86000LM   LFCO-HL-600W-50K-TR |
| • 100W   14000LM   LFCO-100W-50K | • 230W   30100LM   LFCO-230W-50K |  |

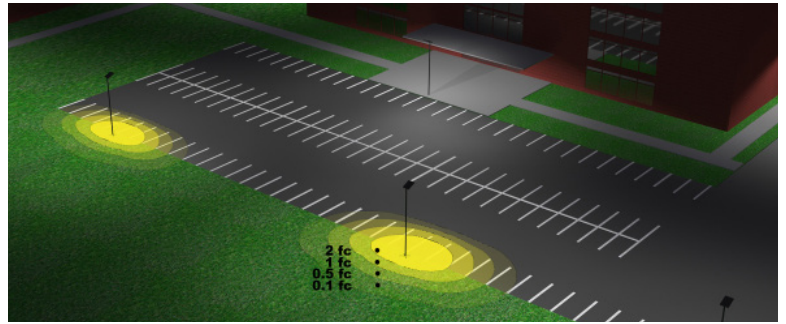


# Photometrics: LFCO-50W

TYPE III



BUD Rating: B2-U1-G1



Area 62'x 85' Mounting Height: 15'

## Other Views:



Front View



Side View



Back View

## Performance Table: LFCO-50W

MODEL NO.	Wattage	Voltage	Lumens	Color Temp.	BUG Rating	LPW
LFCO-50W-40K	50W	120~277V	6900LM	4000K	B2-U1-G1	138
LFCO-50W-50K	50W	120~277V	6900LM	5000K	B2-U1-G1	138

## Sample Ordering

Model      Wattage      Color Temp.

LFCO - 50W -

40K = 4000K  
50K = 5000K

## Accessories Options

Blank = No Option For Accessories  
WEC-8RC = Optional Motion Sensor Remote Control

## Factory-Installed Options

Blank = No Option For Accessories  
OPT-EM-OD2EXT = Emergency Battery Backup  
OPT-3MPC = Microwave Photocell with a 1/2" threaded  
OPT-SEN-3MR-3 = Programmable Microwave Bi-Level Sensor

## MOUNTING OPTIONS:



## ACCESSORIES:



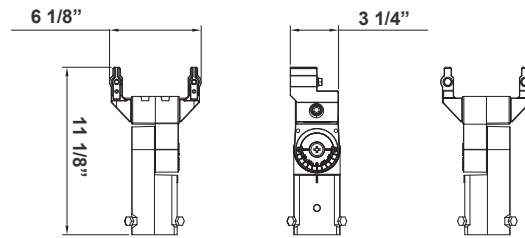
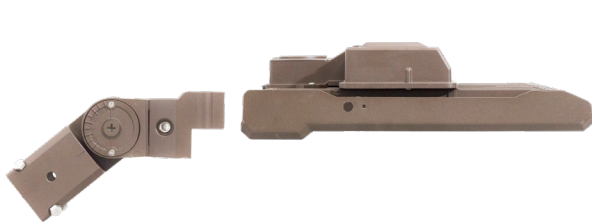
## Example:

- LFCO-50W-40K
- LFCO-50W-40K
- WEC-8RC
- OPT-SEN-3MR-3

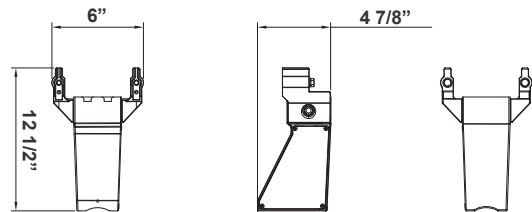
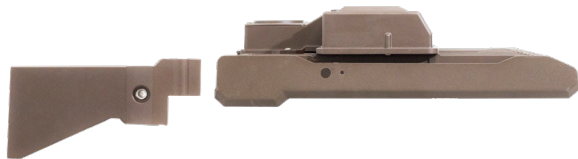
(For LFCO 50W 4000K fixture 120-277V)  
(For LFCO 50W 4000K fixture 120-277V)  
(Remote Control)  
(Programmable Microwave Bi-Level Sensor)



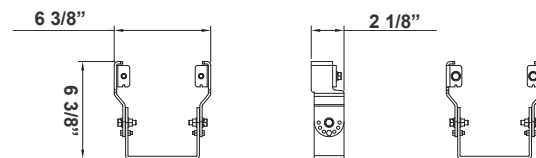
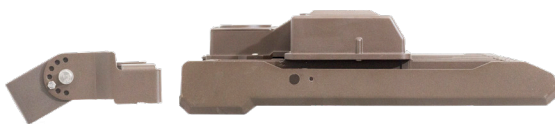
## MOUNTING OPTIONS:



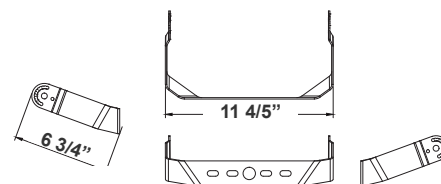
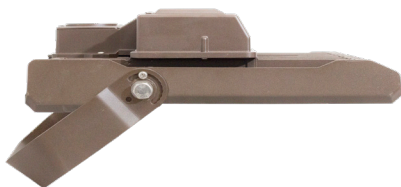
Model	DESCRIPTION	DIMENSION
LFCO-SF	Adjustable Slip Fitter for Pole Mount 2"—2-1/2"	6 1/8" X 11 1/8" X 3 1/4"



Model	DESCRIPTION	DIMENSION
LFCO-SA	Straight Arm for Shoe Box Applications Fits Square & Round Poles 3" Wide	6" X 12 1/2" X 4 7/8"



Model	DESCRIPTION	DIMENSION
LFCO-YK	Adjustable Yoke	6 3/8" X 6 3/8" X 2 1/8"



Model	DESCRIPTION	DIMENSION
LFCO-TR1	"U" Bracket	6 3/4" X 11 4/5"

